

METAL 01



BRUSHED BRASS



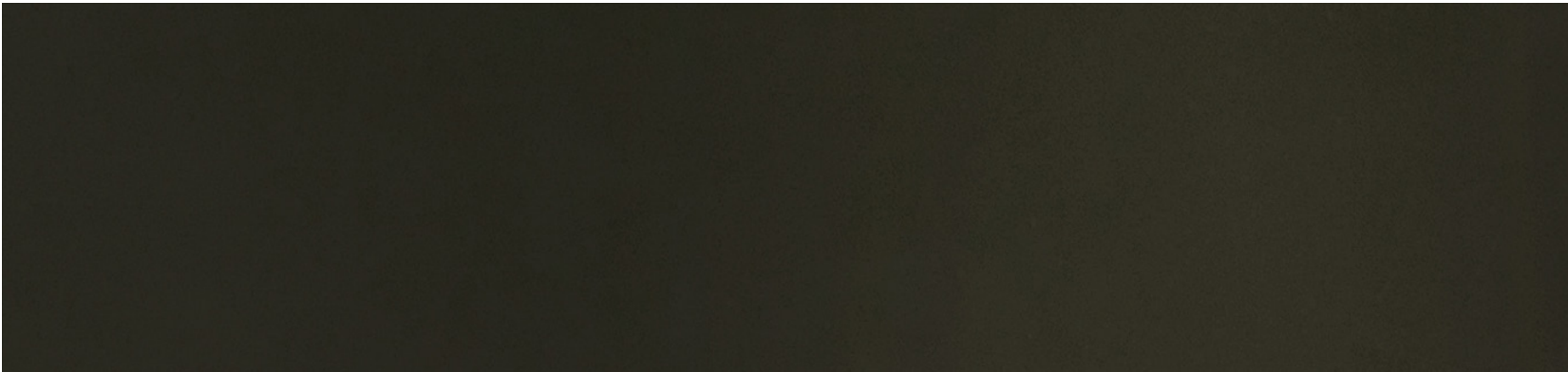
MATTE BRASS



LIGHT ANTIQUE BRASS



BURNISHED BRASS



DARK ANTIQUE BRASS



POLISHED BRASS



POLISHED NICKEL





METAL 02



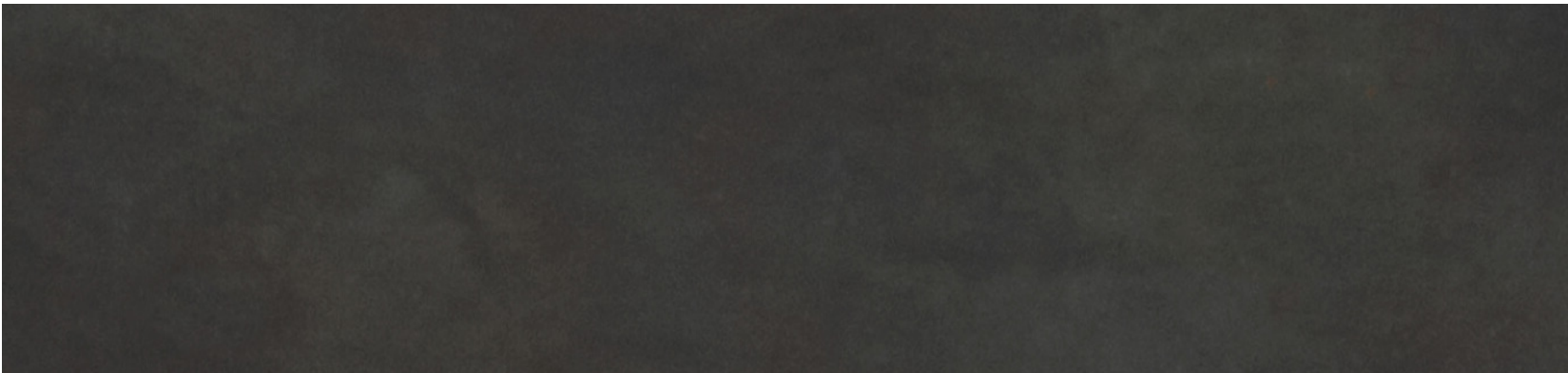
SATIN NICKEL



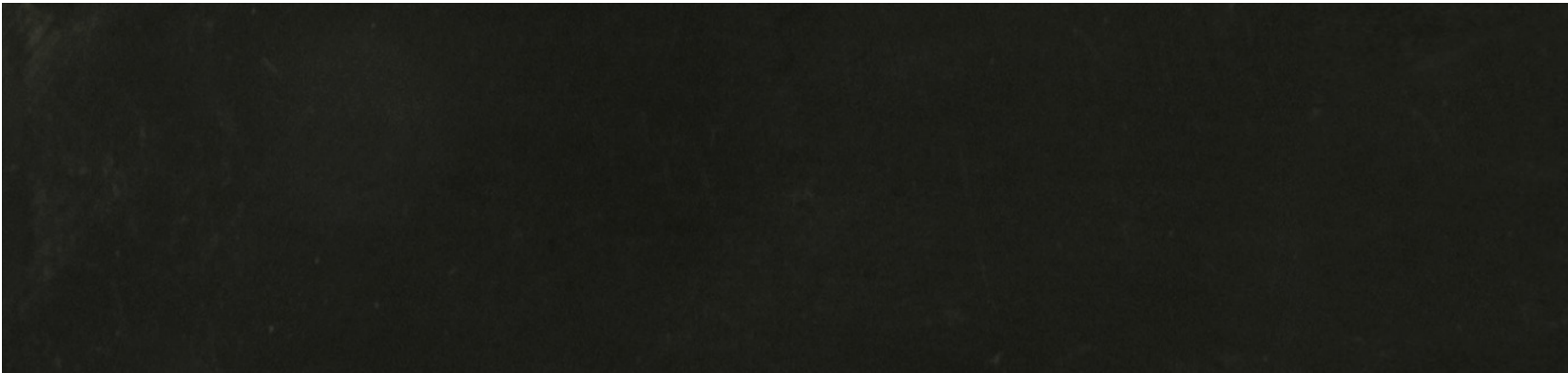
WHITE POWDER COAT



BLACK POWDER COAT



PATINATED STEEL



CLASSIC BRONZE



OIL RUBBED BRONZE



MARINE OIL BRONZE

