

# LAMPO

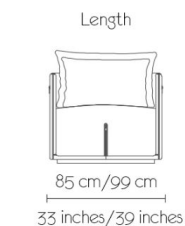
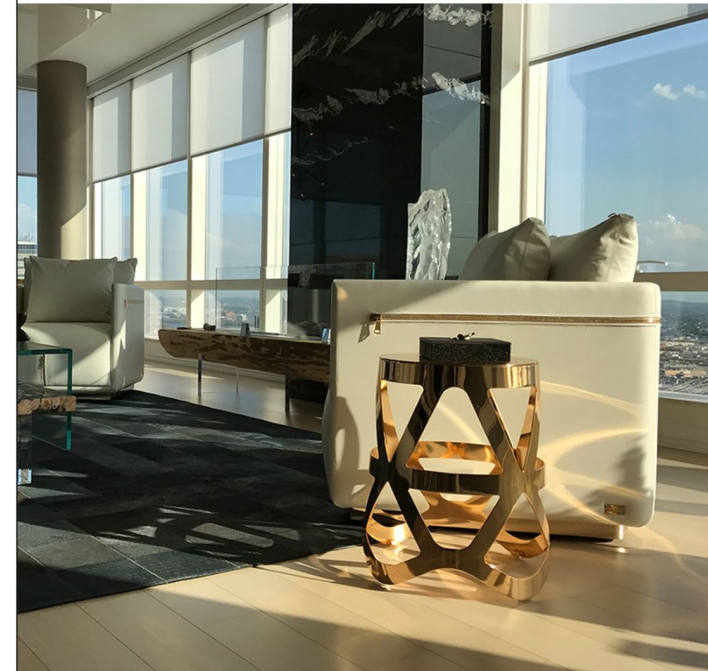
Armchair - Ref: LAMPO ACS / LAMPO ACL

The love for details in fashion couture inspired this sleek refined armchair with its oversized tailored zippers. The cubic shape of its body with thinly designed armrests is softened by slightly rounded edges and rests on a noble metal base with swivel mechanism. The diligent workmanship shows in every stitch and makes the LAMPO armchair a luxurious statement for your living room.

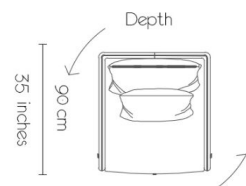
Designed by Architect Fernan Hernandez | *Hand-crafted in Italy.*

Upholstery: Fabric, Velvet, Lux Fabric, Leather, Nabuck, Lux Leather.  
Metal: Inox, Rame, Oro, Bronze Shadow, Canna Di fucile, Ottone Anticato.  
Swivel mechanism or optionally not.

As shown | Body: Leather DFL Florida 2052 Metal: Oro Lucido  
Available in other materials upon request.



COM/COL - ON REQUEST



\*Available in two different dimensions.

## J NELSON

954 929 8880 JNELSONINC.COM