

# BELLA FIGURA

## Tesoro Tall Chandelier

**CL645-T**

Collection Name

**MODERN MURANO COLLECTION**

A stunning ceiling light with a metal frame and strings of hand-made, irregular Murano glass drops in a variety of colour combinations. The G9 bulbs are fitted inside custom-made glass covers with a satin finish, which give a beautifully soft light. This version of the Tesoro chandelier comes in two sizes and is ideal for atriums and double height hallways.

### Test Certification

IEC (International Electrotechnical Commission) test certificates available - will incur a surcharge  
UL (Underwriters Laboratories) test certificates available for the USA - will incur a surcharge



CL645-T-95 in Clear and Amber Murano Glass and Gold Leaf

### Available Finishes

#### Metal Finish



Gold Leaf

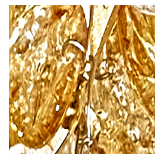
#### Murano Glass Finish



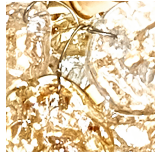
Clear & Amber



Clear & Black



Tesoro Amber



Tesoro Clear



White & Clear

## Available Sizes

---

### Size One

CL645-T-60,  
Height: 75 cm (29.53")  
Diameter: 60 cm (23.62")  
Bulbs: 12 x 25w or 4w G9  
Net Weight: 15 kg / 33 lb

### Size Two

CL645-T-95,  
Height: 170 cm (66.93")  
Diameter: 95 cm (37.4")  
Bulbs: 35 x 25w or 4w G9  
Net Weight: 90 kg / 198 lb

The dimensions of the central rod/chain and ceiling rose are not included in the height measurements  
Standard rod/chain and ceiling rose is 50cm if not otherwise specified by customer

Please note the hand finished nature of the 'leafing' process means the end result is a raw and organic looking finish - highlighting the unique, 'made to order' qualities of our artisan crafted product.